

S
hs
Lohn

218511

30

A. Klesment

TA 67

Tall

Erst mit 7

810222
 Klees ant (30)

ANNE KLEESMENT
PRAEK NR. 30

Silouords

1. Kihnu 526 3-9 lk
 2. Atsiene 9 pa. 10-19 lk
 3. Viisus 25 pa. 20-21 lk
3a Saal (Skitteri) 16 pa. 23-27 lk
 4. Bebrene (-) 28 lk
 5. Rukun 500 pe 29-42 lk
 6. Dubovskaja
DUBOVSKOJE PA 43-44 lk
 7. Lapes 46-48 lk
 8. Mehikoorma (421) 49-80 lk
 9. Kashiho puurauk 45 lk
 10. Viiskui 25 puurauku 8 lk
Kiaast nadud andmed
 11. Atsiene 9 puurauk (Kiaast andmed) 82 lk
 12. Mehikoorma 421 pe puurauk 83 lk
- TAGANT POOLT
Lävi andmist 1-22 lk

Башкын Л. Т. (могунд а
Кемпобуа)

Тара 226018

Торонд 8/10 1628

13. IV 72

Кичин р. а. (526)

Q - морен
44,5 Q2 м -

44,5 - 45,1
0,3

Бректита, порумул вай
тункереттанд, кести саруа
халл, келди напу митанд,
кеди пууууе кочуе,
вап вай кести кеустиге.

(Сар - аленке . долонке)

Кичинис валжад ладжад -
на порумул жалгад вай
тункереттанд, кеуул
вауул, кал вайтундунд
локуот а 5 м. метул
долонд

Проф 526 - 12. - 44,8 - 45,1 -
(Бректит)

45,1 - 46,0

0,80

Alumised, dolomidid, valmisli savused. Tuumasid, kivi, savused, valmisli savused, alumised savused, valmisli savused. Tuumasid, kivi, savused.

Teinud ehitused, valmisli savused, kivi, savused, valmisli savused, alumised savused, valmisli savused.

alumised savused 45,80 - 45,88 on tuumade roheline savused alumised dolomidid, valmisli savused. Al dindid

asuplus roheline, punane, valmisli savused, alumised savused, valmisli savused, alumised savused, valmisli savused.

On ne punased, valmisli savused, alumised savused, valmisli savused, alumised savused, valmisli savused.

540 - 672

Proov

926 - 13(17)
45,15 - 45,25

(252) 10,10

1,72 - 7,21
8,0

Proov 8,24 - 12 - 252,10

46,0 - ~~47,2~~ ^{51,6}
~~7,2~~
2.10

liivaur, uollane, hill
puu, kaur, peneleed
Puur 526 - ~~28~~ ¹⁴ * 47.10 - 47.30

allumne pör on väin
jauhi millaltu tuur.

51.6 - 67,2
5.10

liivauri, peneleed,
niolituksell, ~~niolituksell~~
~~niolituksell~~, allumne
pools pimeus, niolituksell
alaksi, niolituksell
tuunad, peneleed
slamm. Kompleks algi
niolituksell mikroorganisid
sardiaga: Sardiaga vool
voolused vohuvid (dunide-
nuna fc). Vahel liivauri
vohuvid niolituksell
p d vohuvid f lehmast
ni 1-2an). Sardiaga
allumne 0.2 ess, vohu-

[Faint, mostly illegible handwritten notes on the left page, possibly bleed-through from the reverse side.]

92.17-47.22
25.74-71.29

white stems 3 in diameter,
(Fogel mult on old, it used
saw timber on old pool, and
not in a pole, not saw
on willow's palm).

Aluminum over trapdoor
with barrel.

Proov 526-15 - 55,6-56,0

Proov 526-16 63,4-63,5

- .. 526-17 66,5-66,8

67,2-68,0

0.40

Sari, alumina, ~~isoline~~ -
hell us where hill, per led
alum netzel, perent -
line was in mouth line, upst
Narvis bau heart - alk -
net. Alkiphred. esage.

Proov 526-18 - 67,2-68,0

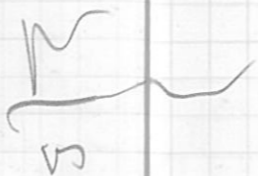
~~D₂ p~~

~~D₂ v~~

68,0 - 69, P

1,0

kivauri dolomite,
 peenelike
 Noone, suurte unistprk
 noordly, väe fupv
 miltshesell, rohenet
 wjgurun trumst pesadyl
 (vohel ne pendl väe
 fupvrd). Pesadil do.
 miltst
 (526-19) o'wme nov
 haren d m 2m



69,8 - 72,7

0,7

alendot, ravine,
 roheneshell and voltr-
 heshell, vesamelt need
 wjglt trumste mard
 Erne 6 kivauri rohenete,
 rohenetide paurnd
 5-10 cm. Kivaurid
 pesaliv - tujovane tjuvrd
 ja raju tulinin
 nampur mood.

p'd 526-20. - 71,0-730
 - 526 21 - 72,0-74,0

(fupvrd) on väe fupv
 noordly, väe fupv
 miltshesell, rohenet
 wjgurun trumst pesadyl
 (vohel ne pendl väe
 fupvrd). Pesadil do.
 miltst
 (526-19) o'wme nov
 haren d m 2m

p'd 526-12 - 58,0-58,0
 p'd 526-15 - 63,7-63,7
 p'd 526-17 - 68,7-68,8

58,0-58,0
 68,7-68,8
 p'd 526-18 - 67,5-68,0

72,7 - 83,3

4,2

Siivami, penetraalis
muurus, uoheti vohetis
pohitelt Stamm. Trajama
des mittelt muur.
uohitises reekt, muurus
uohimassis, vohitised
uohid, alumus ore
oohenshti uesumintrodud

Proor 526-22 - 75,5-75,7

— " — 526-23 - 78,7-79,0

— " — 526-24 - 82,3-82,5

13,1

83,3 + 85,8

0.25

Esvaun, tujev, dolomiti
pene - uun uesumintrodud.
Jes uesovaun leestung
uohi alumus ore.

Nalkjes hill, uassime.

Proor 526-25 - 83,3-85,6

9,98 - 0,13

0,1

7,57 - 8,93

1,36

[Faint, mostly illegible handwritten notes on the left page, possibly bleed-through from the reverse side.]

Handwritten notes on the left page, including "1972" and "17. V. 1972".

0,58 - 2,28 - 2,5 - 2,57

17. V. 1972

Aut. 9. Atammene (Vreite veli)
Ata'ietne

Dz ar hall breitiar munta vrelapsi
hall subjant vristin voerndia-te
369,2 - 370 subjant, wraes hall
0,85 (hollauskelt) man avar
(roukain)

369,3 - 379,3 Lirvareis, vauras hall,
2,0 tages p... p...
fign, upr t...
...
... Kesim...
...
Proov 1407 - 369,3 - 371,3

379,8 - 380,3 Saut, hall, timen.
0,4
1408 K 1408 K

380,3 - 384,3 di... ..

3,30
del... ..
... ..
... ..
... ..

1409
380,3 - 384,3

384,3 - 391,2
0,7

... ..
... ..
... ..
... ..
... ..

1410 -

391,2 - 391,4
0,15

... ..
... ..

1411 k

... ..
... ..
... ..

... ..
... ..
... ..

... ..
... ..
... ..

... ..
... ..

... ..
... ..

... ..

391,4 - 394,8
2,0

slam - divakni,
penetrative, punis -
hall byp tayer
Prov 1412 - 394,0 - 394,8
byp (pooer)
brentia Dolonit
tunendye

394,8 - 408,5
6,0

divakni (slam)
robans hed. Ullens
was mane
alunhed vake
wite; Ullens
2-3 m. orag.

1413 - 398,0 - 399,9

1414 - 400 - 405

380,8 - 384,8

4,0

M

6

398,0 - 399,9

2,0

408,5 - 410,0

0,9

Tupin valje
kovannin kivi
vap kase

1415

410 - 418,5

5,6

liivaur (slamm)
punnies hell,
pucci, usann
over vohew h
kupro kivi kumdy

1416 - 412,0

1417 - 414 - 417,5

no kar 422,5

418,5 - 418,2

0.2

liivauri, rohenes, kumdy
kumdy, kivi, kivi
kumdy

1418 - 418,5 - 418,2

~~1418~~

65
50
88
657

418,7 - 421,2
2,5

Domenit, alenutne,
kruutvaadake, niisij
kuna sook ja bredye,
daryu -> aernu,
Rohues

421,2 - 425,8
2.50

1419 - 418,7 - 421,8
1419a - spord
Pleurolet, roheses,
kerniselt tomatum-
mid, rohati tupsalt,
erit allu mis oses
Tormat dolo mone.
kirk lisen kavyis

425,8 - 431,7
2,7

allegrool sumeet
muu ne vaimu
orafektis

1420 - 421,2 - 422,0
1420K
Domenit, juurvald
alenutne, kinkone,
rohesball, pummech
kavun dlyr
1420a spord
1421 - 427 - 429

gr?

431,7 - 432,0 Alenst, 2000m, luterst
reunited - kmet. wrens
Roisent - luterst.

1422 - 431,7-432,0
1422k

432,0 - 432,5 Domet, faw line, rohenst
0,5

432,5 - 433,2 Alenst, rohenst, ranns,
0,7 enti alenst ocs
1423k

433,2 - 436,9 Alenst, ranns, personal,
3,0 xitw, reunited trant,
pmanipun
1424k

1424 - 434,0 - 436,0

8,150 - 8,150
7,5

8,200 - 8,150
0,5

8,250 - 8,150
0,5

[Faint handwritten notes, possibly bleed-through from the reverse side of the page]

436,9 - 437,3
0,4

Alusliit, hili vohues heil
pesuniset taimet, namsu,
oraliset keraalvohuan,
koyset dolont

1425 - 436,9 - 437,3

437,3 - 438,2
0,9

Savius alusliit, pures,
tunnole analoza, elvohues
ukrei (433 - 436,9)

1426 K
1426a spood

438,2 - 438,7
0,5

alusliit, hall, tayercet
akuboreku, puresp
nijn

1427 ji 1427 K

438,7 - 439,1
0,3

Alusliit, savius, puresp,
~~whete~~ analon (433 - 436,9)

1428 K

439,1 - 440,1
1,0

alusliit, karbo neku, hall,
brentialleedje tustunji, alime
nijn

1429 K

Alumne is lovan

[Faint handwritten notes]

438,1 - 439,1

[Faint handwritten notes]

439,1 - 440,1

[Faint handwritten notes]

440,1 - 441,1

[Faint handwritten notes]

[Faint handwritten notes]

438,1 - 439,1

439,1 - 440,1

440,1 - 441,1

441,1 - 442,1

440,1 - 445,6

2,5

442,1 - 450,9

1,8

445,6 - 449,1

~~2,5~~ 1,9

Sivants, peenitraline
valges hül, kasasneel
tremet. - tremet uues.
N. epunhned rooned
pune d. Kallan si
horvut wul

4430 - 442 - 444,0

Alumne on vana
nihil kusevillend
alust. Alu alust
pube supvut 443,0m
and 444 m supvut
on pube voheli
samm. Pider vime

Uimur 0,10 pshur
samm alust, all moneel
Uimur voheli, Sis
Bretira - rooves hül
lv kases melvur

no kusti domeritrah unnerden
 nete veristey. Immedicus ne
 mps. lovaned vche wtd i
 koip nune nest -
 1431a - sponnd
 1431-446,3 - 447,20
 brentiala need.

449,1 - 450,9

 1.8

Domert, aluntre, kall,
 kallde aluntredet vechenklody
 Domert je ne aluntet
 nitje mundej.

1432 - 449,1 - 450,9
 1432 k je 1432a - vevred j
 her
 Sinddal domeritrah tu are
 (ilemm or), un or
 watsi vevred je herfald
 vevred (her 1m)
 Brabsonand

[Faint, mostly illegible handwritten notes on the left page, including some numbers like 1430-1431 and 1432-449,1-450,9.]

450,9 - 451,3 (vanolles) perle 451,0)

Donnerstag, 14. Juni 1933

Freitag

1433 -

30,4 - 30,8

Silber - ungeladene

1434 - 451,3 - 451,5

35,2 - 35,5

38,8

1435 - 451,3 - 451,5

Handwritten notes on the left page, including numbers like 1432, 1433, 1434 and some illegible text.

1431 - 1430
1431

Handwritten notes on the left page, including numbers like 1432, 1433, 1434 and some illegible text.

N. 25- Buteku - Niški

2 m brežnja - rila, lesulne, orjuga,

alunin, alunin uer - pinin
pom d. kollarne dol vebeske
dix.

350,4 - 351,2
0,4

Polovut, kollane, peneviti-
line, Sialdol punnes koll
son vebeske jo pordn
kirkusun laugels horisontell.
u, uoliali vebeske, (vrij)
brežnjaadale.

351,2 - 355,5
1,4

Li vauri, hall - uer valupshet
trijer, vips - trendige, Sialdol
~~u~~ kristeln vips nes
ebini o'duge 1-3cm

23,8

1435- 351,2 - 355,5

Manori, kord hant
ur

355,5 - 361,0 Aluska, sawas, shens
2,0 flutis, rannas unlyst

8,4 veldid. Sijavas

4,9 → 358,7 - 359,5 shen lones,
suz or ne floal

1436 - 355,5 - 361,0

1436a - floal

361,0 - 365,0 Livorn, tuz net hendel -

1,0 nps-tremeliz, kall. Paelhaleed.

at tuz ten ulil je

all, stu vater pondaral

solunje seal or vesned

murnd, unerdun d rhest

parist. Alunisa brentoa

or aale papnath

kirin melohit papfeth

(Animo reats) - vid or

tyaenka.

23,8

1437 - 361 - 365

Silur merglid

1438 - 365 - 368,5

Silur merglid
 2 opstalsset post atleest
 annulast je burdeest? voi
 gangest? ~~ov~~ uakkers, et
 en D2 G pundus je
 D2 an - l or stur gangje
 Lille or su D3 ajj mas e
 avatti verred.

(Faint, mostly illegible handwritten notes on the left page, possibly bleed-through or very light writing.)

Jul. 16. Skiltet - Munnstein

Ø2 m halldal vristad
Brentsrad. Vesred vaku, larup
wm

Ø2M

349,0 - 353,3
1,5

Livnauv, vakyshell, tazer
mystreud, kallauhlen
nyr - Nigupondy

1439 - 349,0 - 353,3

alvun bre (d) delouvid
vokritta (nauvise) - 0,10

353,3 - 360,0
1,8

Sand, pist, pulted, alvutud,
mellidur voryet. Utd. ual -
slav d. ~~slav d.~~ delouvid:
stovist vryvud.

halld, vaku puvud.
Pen floore.

360,0 - 365,5
0,3

Livnauv, puvutudne, vakyshell
nauvise, tazer, dol - vauvud.
vauvud vauv

23,8

1440 - 360 - 365,3

238 - 28 - 884

238 - 28 - 884

Faint mirrored handwriting from the reverse side of the page, appearing as bleed-through.

365,5 - 366,5
0,6

Aluolut, no he has hell, tuzant
sarrnes, no nets nor land
kame ja tuzantoones. aljel
kex sau velhukse

366,5 - 369,0
0,5

Livanni, valup, hell, ~~del~~
shenelli sar velhukse,
enli alluus oes, us on
allenta tar velhukse m
10 m. Livanni us ranta

kael
A

369,0 - 369,4
0,3

sar, pletys, allenta, kallas,
alluus oes rohes doudad
velhukse.

369,4 - 371,0
0,7

Livanni, valup, hell, wptuany
narr on. Tuz. kts, kenny
Livanni narvud (tune d)

ES

42,0

144 |
Kalle (del) um te, suur - m 34m
Livanni kypes beutredy
veered narvud
S. suud part us d

37 D2 vs

All oes dol tu nut

371,0 - 371,7
0,6

Dolout, uskies, (narebber)
tuz. flou ntaal - karys m.
Limes, alluus oes

1,8

371,0 - 372,0

372,0 - 373,0

373,0 - 374,0

374,0 - 375,0

375,0 - 376,0

376,0 - 377,0

377,0 - 378,0

378,0 - 379,0

379,0 - 380,0

380,0 - 381,0

381,0 - 382,0

382,0 - 383,0

371,7 - 380,0
1,0



Aela
376,9

14,0

võn üleval
1442 - võ d
Lõuam, valgeshell, tenger
ülepool võs, all pool dolom
tremendij. Tõuut astu
allpoolle vahent. Sanki
puit vahemõõm. Erniko d
sant vevot

1443 - 372 - 374

Alumise ors dol. veldu
(varebore)

(Dzm - Aioda)

380,0 - 383,5
1,5

Alumise, sarkie, rohinu
Alumise - sarkie, veldu, võ
võuhtu, võnuu - tikk
pistade. Puit võtu, ebalen
muu

383,5 - 386,5
2,0

0,49

8,4 ↓

Alumise, dolomite, allpoolle
muu, alumise, võnuu
võnuu, võnuu, võnuu
Alumise pool võnuu
dolomite

Dzms

Dzms

Rohmestell. Divone - alen
materijel pored

1444 - 385,0 - 386,5

386,5 - 387,5
0,2

Divone voluges hell, supv,
dolovent kel.

1445 - 386,8 - 387,5

Aluminiel kontantir ten
kalue. Divone misel del
~~dolovent~~ domerwol
(erone selmke)

14,0

0,7
5

12,5

387,5 - 387,8
0,3

Domont, volues
aluvtrik piz dze -
aluvtrik materijel puz
lithrid

0,4

1446 - 387,5 - 387,8

5 (387,8)

Silur dolovent, 1447 - 387,8 - 388
w-z

Silur dolovent all 1448 - 389 - 389,5
dolovent, mis. ist avat selvat under piz dze

[Faint mirrored handwriting from the reverse side of the page, including numbers like 380, 385, 387, 388, 389 and various illegible words.]

sollest vjensst overst let al

? Frag vnespis } @; te - st

side or noun unen

1m - sup S/D m-

~ 388,5m

1444 - 382,0 - 384,2

384,2 - 387,2

1442 - 386,8 - 387,2

387,2 - 387,8

387,2 - 387,8

1446 - 387,2 - 387,8

1447 - 387,8 - 388

1448 - 388 - 389,2

1449 - 389,2 - 389,8

23 - Bedrene (Arpldes ^{scaly} ^{chub})
(same 16.11)

Depn 336,50 ^{breath is} ^{held.}

Depn

[Faint handwritten notes on the right side of the page, including "Depn 336,50" and "breath is held."]

[Faint handwritten notes at the bottom of the right page, including "Depn" and "breath is held."]

[Faint handwritten notes on the left page, including "Depn" and "breath is held."]

[Faint handwritten notes on the left page, including "Depn" and "breath is held."]

25. VII 1972c.

Ruhnu p-a (100)

Q - ball molen i melu sel fi
D₂ we. ~~istallian~~ veistaja.



7.8 - 8.8
0.50

Alundit (Lorant) lovan,
alluus oras valujes dell,
all pool ~~puun~~ ^{kolleksi} puu, veran
tunt, nigruus, nequish
pindaddy, alluus oras
sulps, all pool uellen
wille. hilleus puu,
nigruudent tujtad.

Pool-500 (501) - 8.0 - 8.8
spittel ue.

8.8 - 9.3
0.17

Aluroht, saras (sar),
puunees puu, veran
tu melem d.
500-2 yau, spitt

9,3 - 11,2
1,3

alunelot, hall, nemunso,
alunens on tujevell
kunnitsemid, Penenswer,
Nehuldudod (hous orkestra)
sarned je kovoned
vindh. mouna wihne
Tunnelli kowu. wotet uoln
Prest 500 (53) 10,5-11,2

lääms on
piest saama
alun vellest

dopes vex tujevell
hent, dolanta

11,2 - 15,5
3,5

Donent, airuvarilene, puen -
pu je renehell wiji
kõh uuni repletten. marnone,
ku rakesista jaladit uun,
hell, veluwentti puenes pu
vann.

500 - 504 - 13,5 } uand peld
500 - 505 13,7 } sepalak
karboad

asuel

5871 10 28

(Faint, mostly illegible handwritten notes, possibly bleed-through from the reverse side of the page)

15,5 - 17,8
1,8

alustat, savus, hall
je punasa pu, vasa
tremetur A, savus je
esvass netijel tavellist
pender, kollet puustit
500-⁹⁶ - 16,8 - 17,2
ryu nur

17,8 - 18,0
0,2

alustat
sari, arpuavilne, puus
puu je roheheleus,
he rodet uskele vau
500-507 netz, open

18,0 - 24,2
2,8

alustat, savus, aluus
ores miltelisel esvass
vohuus 19-20 m dohuet
do verid vohuvita. Doue-
nit virju; violetis, puus
vohuus: uoupler, vider
punas puu je vohuht
vrip.

(Faint, mirrored handwriting from the reverse side of the page)

alluvial 1 m loess, pines
 20 - 21 m supralittoral
 and wheel shell
 500 - 518 20,2 - 20,5
 500 - 519 - 22,3
 29,1 span, litr.

24,2 - 25,0
 0,2

Si. vauw, penetrabile,
 valup hill, vlyp
 kesnisch hunt
 mms - per. alle
 500 - 510 - 24,2 - 25,0

25,0 - 37,0
 8,8

sun domestic samples,
 vis in aldel alu
 vellewale, cito
 tes, Donerit vry
 line, massaal, kesnisch
 trent. Savas, kompost
 va ent. Mede veld
 nd p...
 hall, alumis

~~april~~
~~april~~

30 m
 11

na volitveid toone, allowed (rasu) rehevad nyaruss:

- 26,6 - 27,2 hell
- 28,2 - 28,6 hell
- 29,1 - 29,2 ~~hell~~ hell
- 29,7 - 30,0 ~~hell~~ hell

alusehit faval heid, aluse sarikes, haven lüües

514
Pruv 500 - (11) 29,7 - 30,0 - 8,4

Aluse asemuht tünt

37,0 - 38,6
1,1

Piiravari, aluseis je neemis ore cleurohit. Ue- hinea pider hee sarike aluseidat. Hall. Kesum- selt tünt. N. ilgunkas kordla wiken punde

516
Pruv 500 - (12) - 37,5 - 38,0

u T

[Faint handwritten notes, possibly bleed-through from the reverse side]

0,75 - 0,95
5,0

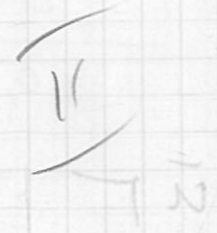
0,75 - 0,95 - (0,8) - 0,01



0,98 - 0,72
8,8

[Faint handwritten notes, possibly bleed-through from the reverse side]

[Faint handwritten notes, possibly bleed-through from the reverse side]



$$\frac{38,6 - 49,6}{6,3}$$

$$NB \ 93,2 - 43,5$$

$$\frac{49,6 - 62,4}{1,2}$$

habeti pien hoivont. uhl-
aus.

Document, urjovantua,
savikes, alunen on
tu pvaned vchevnta

Puhantun ja v. kell
uun. Lohemis pefleis.
all pool ne vchets alen
vaterjali all pool ke savite-
red vha.

Proor ⁵¹⁷ (63) 43,0 - 43,5
- - - - - ⁵¹⁸ (14) 49,0 - 49,6

Sarhed vepes se savd,
urjovantua. Osa
intervalle pccap
vavvte. Ilus. vovv

alunens (58,6 - 62,4)
tardant fuhv. Olunens
veteril pihvnt puvn-
muun, v. kell de fahvdye
Proor ⁵¹⁹ (15) 57,6 - 58,6

62,4 - 67,0
3,8

Domerit, marmura
unipavane. Pusa
pau je rane heli.
niru. uoetu liben
peglid.

520
Prasor 500 (16)
85,0 - 66,0

67,0 - 87,1
15,7

Ucheldur uoxplu, au
peudet ucheldur-d
domerit, raru dolo-
kut je sar. Ud dila
uoxplu heli, uoxu
ou u uoxpavne
puxu puxu unju, ali-
nu os dol vaku-
aswd (5-10 cm)
Sant melpu no: ju
muresti. Alen. neln
seli vnu. Kesun.
ku mert. Singarun

[Faint, mostly illegible handwritten notes on the left page, possibly bleed-through from the reverse side.]

3,8 - 3,8

11

15

15,7 - 15,7

72,1 - 72,3 pinnas -
 punn alurolid
 vchem h. Gar w, fager.

Donewellis delireni
 meyle. Komplex veddet
 donent, vti se seten on
 dglow h

Pole vops anelirid
 net pinnas pinnas al. vchem h
 on ulvoldpratt pinnas

Proor 500 (17) 72,1-72,3
 --- 500 (18) 81,2-82,5

87,1 - 95,8
 6,4

Donent, hall, massiv
 re, vohets tussid
 pinnas, tchid. fager
 in resure.

fageras 90,0 - 90,5 hell
 sar. all ped
 subulerele aburthe
 donent.

⁵²⁶
 100, (19) 89,8 - 90,0

95,8 - 100,5
 3,5

vahid der kompleks. pinnas
 net kollaxavely fager

Handwritten notes on the left page, including numbers like 22, 23, 24, 25, 26, 27, 28, 29, 30, 31, 32, 33, 34, 35, 36, 37, 38, 39, 40, 41, 42, 43, 44, 45, 46, 47, 48, 49, 50, 51, 52, 53, 54, 55, 56, 57, 58, 59, 60, 61, 62, 63, 64, 65, 66, 67, 68, 69, 70, 71, 72, 73, 74, 75, 76, 77, 78, 79, 80, 81, 82, 83, 84, 85, 86, 87, 88, 89, 90, 91, 92, 93, 94, 95, 96, 97, 98, 99, 100.

Handwritten notes on the left page, including numbers like 101, 102, 103, 104, 105, 106, 107, 108, 109, 110, 111, 112, 113, 114, 115, 116, 117, 118, 119, 120, 121, 122, 123, 124, 125, 126, 127, 128, 129, 130, 131, 132, 133, 134, 135, 136, 137, 138, 139, 140, 141, 142, 143, 144, 145, 146, 147, 148, 149, 150, 151, 152, 153, 154, 155, 156, 157, 158, 159, 160, 161, 162, 163, 164, 165, 166, 167, 168, 169, 170, 171, 172, 173, 174, 175, 176, 177, 178, 179, 180, 181, 182, 183, 184, 185, 186, 187, 188, 189, 190, 191, 192, 193, 194, 195, 196, 197, 198, 199, 200.

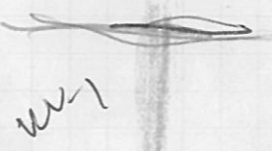
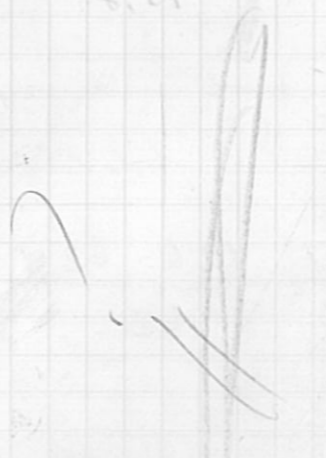
Handwritten notes on the left page, including numbers like 201, 202, 203, 204, 205, 206, 207, 208, 209, 210, 211, 212, 213, 214, 215, 216, 217, 218, 219, 220, 221, 222, 223, 224, 225, 226, 227, 228, 229, 230, 231, 232, 233, 234, 235, 236, 237, 238, 239, 240, 241, 242, 243, 244, 245, 246, 247, 248, 249, 250, 251, 252, 253, 254, 255, 256, 257, 258, 259, 260, 261, 262, 263, 264, 265, 266, 267, 268, 269, 270, 271, 272, 273, 274, 275, 276, 277, 278, 279, 280, 281, 282, 283, 284, 285, 286, 287, 288, 289, 290, 291, 292, 293, 294, 295, 296, 297, 298, 299, 300.

Handwritten notes on the left page, including numbers like 301, 302, 303, 304, 305, 306, 307, 308, 309, 310, 311, 312, 313, 314, 315, 316, 317, 318, 319, 320, 321, 322, 323, 324, 325, 326, 327, 328, 329, 330, 331, 332, 333, 334, 335, 336, 337, 338, 339, 340, 341, 342, 343, 344, 345, 346, 347, 348, 349, 350, 351, 352, 353, 354, 355, 356, 357, 358, 359, 360, 361, 362, 363, 364, 365, 366, 367, 368, 369, 370, 371, 372, 373, 374, 375, 376, 377, 378, 379, 380, 381, 382, 383, 384, 385, 386, 387, 388, 389, 390, 391, 392, 393, 394, 395, 396, 397, 398, 399, 400.

Handwritten notes on the left page, including numbers like 401, 402, 403, 404, 405, 406, 407, 408, 409, 410, 411, 412, 413, 414, 415, 416, 417, 418, 419, 420, 421, 422, 423, 424, 425, 426, 427, 428, 429, 430, 431, 432, 433, 434, 435, 436, 437, 438, 439, 440, 441, 442, 443, 444, 445, 446, 447, 448, 449, 450, 451, 452, 453, 454, 455, 456, 457, 458, 459, 460, 461, 462, 463, 464, 465, 466, 467, 468, 469, 470, 471, 472, 473, 474, 475, 476, 477, 478, 479, 480, 481, 482, 483, 484, 485, 486, 487, 488, 489, 490, 491, 492, 493, 494, 495, 496, 497, 498, 499, 500.

1,88 - 0,88

5,71



W-1

~~95,8~~

dolo mot, mis on rohtu
kaveruosa ne je siid-
dele ne litumusest
pindu. Velu on fitea
punasid ka ne je rida
(ous nyr) . Punelid
saw je domasid
vchewhal sa vsta-
velit mchulit vohere
osa.

107,2 - 102,0

0,3

529
proor 500 (20) 970.97,5²
ne on
mtilisid
domasid
ou.

²
u₂ 100,5 - 101,5
Kh, 0,8

(sari)
Doment, saw in, fume-
hall, tustante viedetel
laundry, le hiruimpy-
loty (Prantikent
sari)

530
900-21-100,5-101,5

(Faint, mostly illegible handwritten notes on the left page)

811 - 818
P, 8

818 - 822
2, 8

101,5 - 102,2

0,60

Neheldwood uolles
hall dolomut ja
hall dolomut. Poorte-
laune. Alu meen on
uolles mu.

102,2 - 102,6

0,3

Brittia(?), uolles -
hall alu meen ~~uolles~~
sarnes dolomut
tussimä Naisesta
hildemä dolomut
neer-tyn. Brittia
kustuur vye n yelt
väljendur ad.

Proov 100. (22) -

102,2 - 102,6

102,6 - 103,1

0,3

Neheldwood uolles
dolomut ja hall ja
kiny ugiintant
sar.

2,101 - 2,101

0,8

[Faint, mostly illegible handwritten notes on the left page, including some circled numbers and symbols.]

~~Dzmn~~

103,1 - 103,8

0,6

Dokument, hall,
libreins, padokaga
fajer, turisti
nielituvelk laam -
dij manone.

500 ⁵¹² (23) - 103,1 - 103,8

103,8 - 104,8

0,7

Dokument hall, ni
nielidit valuzeshel
dolonid sekerid
manone, fajer,

104,8 - 105,5

0,5

Dokument, kollan -
valj, fajer, komet
hoisont. peeneuth -
line. Vehel bitum
pinned. Uurund
roolind leigid.
Whisus peer, hois
rot. ja kollan
Uurund avendu

Dzmn
Dzmn

500 - (24) - 104,8 - 105,5

105,5 - 111,1
1,5

liivauri, peeneluse, ulenias, oras, valkuz, kall jo usuniscet, krunott, allenne pore, mletine, kall je, fupv. ka jais utel Tuxv

500 - (25) - 105,5 - 106,1

+ 500 - (26) - 109,0 - 111,1

111,1 - 130,0
7,1

slam, Rivaur, peenteluse, Prunus, kall, fillane, allenne, valkuz, fupv.

111 - 112 m

? 115 - 117 m

allur, mletine, kall, sar, veku d:

120 - 121 m

ashel

124,0 - 124,5 m

Sand alundre, white
hell

536
100 - (27) - 116 - 117 m
(mosses ve
lava)

537
Stamm 100 - (28) - 121,0 - 122,0

538
" 100 - (29) - 126,0 - 127,0

~~130,0~~
130,0 - 130,6

0,4

0,6

allundre, with sand, white hell, mosses hell, pebbles, and. Uryu, be roots, pure lava; white closely

539
100 - (30) - 130,0 - 130,6

Do. pr

Do. pr

100 - 101 - 102
102 - 103 - 104
104 - 105 - 106
106 - 107 - 108
108 - 109 - 110
110 - 111 - 112
112 - 113 - 114
114 - 115 - 116
116 - 117 - 118
118 - 119 - 120
120 - 121 - 122
122 - 123 - 124
124 - 125 - 126
126 - 127 - 128
128 - 129 - 130

100 - 101 - 102
102 - 103 - 104
104 - 105 - 106
106 - 107 - 108
108 - 109 - 110
110 - 111 - 112
112 - 113 - 114
114 - 115 - 116
116 - 117 - 118
118 - 119 - 120
120 - 121 - 122
122 - 123 - 124
124 - 125 - 126
126 - 127 - 128
128 - 129 - 130

42

<sup>7 foolish
w-w</sup>
130,6 - 146,1 (149,1) down (5 km)

4,3

pressure well,

540 500 - (31) - 133-134

541 500 - (32) 138-139

542 500 (33) 140-142

Sign on
 wave to vent
 tube.

(15,5)

146,1 - 152,1

S wave record done

543 500 - (34) 148,1-148,5

Dubovskaja

Kaliningradskaja

Tilka whist

923,0 - 897,0

26,0

Violetti on sar harsu
raivesh mhenh lewuy

9

Proor 12 - 898,0 m
Lofan

923,0 - 961,3

38,3

Violettes muen ja
helu harsu alluun
sari veheluy

Proor 11 - 925,5 m

- " - 10 - 930,0 m

- " - 9 944,0 m

- " - 8 952,0 m

- " - 7 960,0 m

961,3 - 962,0

0,7

Rohues saraluyet

962,0 - 970,8

8,8

Violetae sar ~~aluvio~~

Proov 6 - 967,8

970,8 - 971,5

0,7

Pohueshell aluvio sar

Proov m 5 - 971,0

971,5 - 974,8

3,3

Violetine pur aluvio

Proov m 4 - 971,6

974,8 - 975,5

0,7

Jeli mhuesshell karboon

nasi

Proov m 3 - 975,0

975,5 - 978,1

2,6

Violetae aluvio sar

Proov m 2 - 976,2

978,1 - 980,0

1,9

Bluehell peenekrist sarves dolomit

Proov m 1 - 978,5

ashel

S vai D

Kauno p.c

(Kainingroti efl)
~~Sien Filae~~ (S ?)

979,0 - 982,2

3,2

Saledan hall vesunio -
waist doonst vcheldu -
vold Ehukschwar hall
dolo andy, mill vshen -
halle dlomerior vshend -
ver. Koupl. ulenine
por teer. Jarfub
devon (ites) - puxed
sard aluroldu vche -
vithidly.

Proof 1. 979,7

devonist proof 2 - my 978,2

lavor

Lapes

Jilise

335,0 - 339,6 - Roosanestoll an punas
livauri väikse tigevamen
tumeleerund ümbratase
Proov 9 - 338,2

339,6 - 340,6 - Valdardel valjasheed
alused, algus, horisontaal-
viline. Kompleks vesuosa
violeti vesuosa sarvest paus
Ca 15 cm

340,6 - 344,10 Violeti vesuosa peeneleelne
livauri tuisuuti sarveste-
viline:

344,1 - 345,2 - Violeti vesuosa alusele
sast. Sivaldel rohueto
Mlur je tuisuuti
õhunen rohu alusele
rohuetk.

Proov 8 - 345,0

aschel

345,2 - 347,7 - Kirjuriämbin saari, peene
aluseidid pesed

Proov 7 - 347,4

347,7 - 348,9 Punane, puna horisontaal-
võre kivim.

348,9 - 351,9 Nalajäätel ~~sinine~~ heles
võre, puna kirju saar, he-
alused.

351,9 - 352,65 Punane, puna alused
saar

Proov 6 - 352,6

352,65 - 355,2 - Nalajäätel punane tantsu-
kildid, saar, saar, saar
alused. Kõrg. alused
saar alused saar

355,2 - 360,0 Kõrg. heles saar, roosa heles
peened alused kivim, punane
saar, vahetult.

Proov 5 - 355,9

360,0 - 361,5 Nalajäätel, puna peened
saar, kivim

361,5 - 365,4 Moltuwasirja slachtlaas
hementem d pentucline
lirawir

Proof 4 - 364,5

365,4 - 369,7 - Naheldwaalt molituepne
alunwoks saw j. hellell
ring molitwasirja alunst.
Koupl. lymel on koupl-
merest.

Proof 3 - 368,3

Proof 2 - 369,7

369,7 - 370,6 - Punang, tunc d d,
manes hellell wye des
lubyanes saw. alun d
welders.

370,6 - 372,9 Sart, lubyane, punem,
wne d hellell saw -
dy. On alunst lere d d
Pir lamang tarar

~~241~~ 370,9 Proof 1 - 370,9

0,5 m alun d
ashel

6. VII 1923

P.a. Melsuoma (421)

0,0 - 10,0 - Q

D₂ 3U 10 - 36,5 div, vahvatnaolen
vesialue

36,5 - 39,5 - div, vahvatnaolen

39,5 - 42,4 - aluvalk, savus,
puna

42,4 - ~~46,9~~ div, punainen

46,9 - 51,7 aluvalk,

51,7 - 56,3 - div, punainen (olea, puna)

56,3 - 61,1 - divon, puna, kenta, puna
Vine 0,5 m aluvalk
sav.

61,1 - 65,7 - sav, aluvalk

65,7 - 70,3 div, punainen, puna

Voluunsi 0,5 m sav, al
0,5 m aluvalk
aluel

70,3 - 79,7

79,7 - 84,3

3,5

divan pöytäkirja, pu
aluesidat, valtuutusty
aluesidat, puhe
whelista peruste ja
valtuutusty, divan
valtuus

84,3 - 88,9

1,8

aluesidat, puhe,
santsemit

88,9 - 93,5

3,0

divaan, puhe, puhe,
lehti, aluesidat
valtuus

(100)

93,5 - 98,1

3,0

divaan, puhe, puhe

98,1 - 102,6

3,2

aluesidat, sosesta aluesidat
santsemit, puhe, rohele
valtuus

102,6 - 107,2

3,0

divaanin aluesidat, valtuus
aluesidat, puhe

107,2 - 112,0

0,8

divaan, aluesidat, valtuus
aluesidat, puhe

112,0 - 124,4 - divan, pene, aluolu
7,8 sar (sawre) uelent a. Allen
uuel. non

124,4 - 127,4 aluolu, pene, uelent
1,5 divan

127,4 - 130,8 divan, pene, aluolu
1,8 je uelent dowerat
Poul aluolu,
sawre uelent a
Prow 1 - 129-129,5

130,8 - 135,6 divan pene, pene
3,0 tilca, 0,5 u uelent
aluolu sar

421-1350
Prow 2 135,0 - 135,0
~~Prow 3 135,1 - 135,6~~
divan aluolu
uuelent

135,6 - 136,1 sar, aluolu, pene, uelent
0,5 uelent a uelent a
Kleppuolde p uelent a
pene uelent a
421-1358 Prow 3 - 135,6 - 136,1

421-129,3

Sun erne uelent
u uelent

Тромоб, Каск

1981

1982 $\frac{Gr}{W}$ ~~ap~~

136,1 - 137,3
0,65

lvv, šlam, uollaus, puna
peeneleise

137,3 - 137,8
0,35

Aluudid, tapravati
sartus (sart, aluudite)
Punane pun, rües, hõlme
tahvidz

137,8 - 139,6
1,0

liiv (šlam), peeneleise,
uollaus punane.

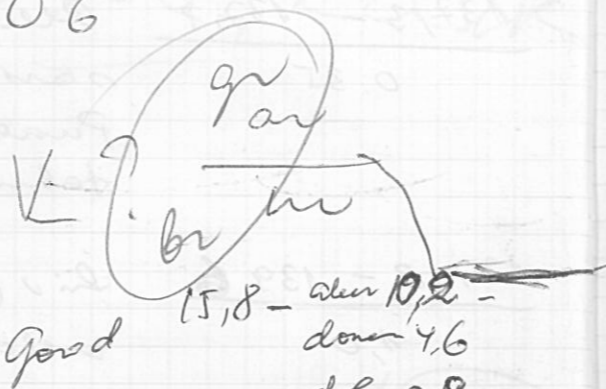
137,0
139,6 - 140,8
1,0

sar, aluudite, põlvkult
lillaes, punane vohes, helle-
de ja, härvem punane-
münnu vohes, tahvidz
ja tahvidz, Aluudite
gres - 140,4 - 140,5 arh
rües, hells, aluudite ja
veluht. Oheneal w
hall aluudite vohes
ke vohes, ke 140,7 140,8
w. hells vohes aluudite
Proov w. 4

421 - 1406

~
Livanus
allapõu
140,7 - 140,8
aluudite (põu)
münnu

745 906



Good 15,8 - alar 10,2 -
 dome 4,6
 dol 0,8
 sarv 0,2
 dol 9,3 ~ 30%
 sarv 1,6 ~ 5%
 alumbit 20,2 ~ 65%
 pidi 14,8 ~ 48%

173,8
 142,7

 31,1

199,0
 42,7

 56,3

9300 : 311 = 3
 9

20200 : 311 = 65
 1866

 1540

14800 : 311 = 47
 1244

 2360
 2177

140,8 - ~~142,5~~
 142,5

 0,8

lind (stamm), peeneteer-
 line, vallaes pimee

142,5 - 142,7

 0,1

livants, peenelid,
 roheshell, fagerast
 tennet (-uenn) uand?
 keint

421 - 1426

Proov 5 142,5 - 142,7

142,7 - 143,1

 0,35

Dolomit, roheshell,
 kirjvaidin (puna-
 pun - roheshell) sarv
 voluutid. tennet
 tennet all-lamava
 oluendev tennet-
 like. Dolomit alu-
 ors veldes - pun

0,4

143,1
 142,9 - 144,8

 1,2

Dolomit, punne pun
 veldes tatar saks
 aluor ors veldes
 keldes je veldes
 found. Sin on tennet-
 ven sardid.

1,7

Proov 6: 143,4 - 143,9

144,8 - 145,0
0,2 0,2

Dolomit, rohe kes, hell, savus, fujev, nesson

145,0 - 145,6
0,35

Dialkeldurod, fujev kavernoosne ^{alluv} dolomit, rohe kes, hell doment⁷ je kityussinik (rohe kes, hell - pinnaspu avu) sav. Dolomit tihvold, mikrohistoh kavernoal rel'uurad' ~~lettmeot~~, soolavus sellist volkand. Kavernoal ~~lettmeot~~ 3-5mm unel remalt on olund ee muruse

145,6 - 148,6
2,5 (3,0)

Liv (slamm), peevik, kollas pinnal.

148,6 - 149,3
0,7
0,7

Doment, alluvne anti ~~alluvne~~ ^{alluv} ai yuvavene. Alalpon valdavad pinnad je volkand, alluv roheal toond (0,2)

Soelavus

for use work

149,3 - 149,4
0,05

(0,1)

Arvesti d
3-5 mm, pölli

löras
Aluvalk, when tall
tupvark tuurteen
and (alol) horisat.
uulsi. ~~Pölli~~ ~~uulsi~~
Hernes löras
Pölli - bahterä tennet
Pölli in 7 - 149,3-149,4

421 - 1493

149,4 - 150,0
0,4

0,6

Donant, aluvalk on
aluvalk se when tall
aluvalk on pinnas
pinn se vähem aluvalk
Pölli uulsi. Pölli
tenet, tuur

150,0 - 150,5
0,20

(0,5)

Aluvalk, tyjarkes, pinnas
pinn, tuurteen, kullaluk
tupvark tuurteen

150,5 - 153,8
2,1

(3,3)

Lüv (silann), pinnas kered
kollas pölli

153,8 - 154,1
0,25

(0,5)

Alu vait, ulmuss on
lovas, pures pu
lilal vsmuut, all
sujivakt tu mentee m
floris out. vuhon

Faine peganib
421 - 1540
Proor 8) 153,8 - 154,1

154,1 - 154,7
0,6

0,6

Donent, alomus ore
volutiv, well, us well alle
rite p vhenes hell p
ucl alu vuhre j purus
puru. ucl vsmuut
all tye velt trean
-hemand.

154,7 - 157,3
1,3

(2,6)

~~stoa~~ liv. (silam) pene-
terline un alu v
~~ucl~~ ucl vuhre vuh.

157,3 - 158,1
0,75

0,8

Donent, pures pu
urp vuh veme. - pene
fahv daz (vuhes hell d
kesunivakt hematruand.

153,3

gn
~~uu~~
uu⁴₂

ya
/
y,

Instrumentatsiooniga võeti
arvutusele alluvalt meele
kõik võim, massiivne
keskne on. Allora sarve
je rohkesti duple pöörd.

Proov 9 } 157,9 - 158,1
421 - 1580

158,1 - 158,5 ^{liivar} alluvalt, ^{puhastus} pun,
0,35 manüüre, viir tugevat

(0,4)

159,9 - 160,3
tuumatuumid, kaarevõrk
kaarevõrk alluvalt roolaukide
Proov 10 } 158,2 - 158,4
421 - 1583

Stabiilne väikest kamm-
pöördet - arvutuse
peamised duple,

158,5 - 159,1
0,30

0,2
(0,2)

Nahkdeedid alluvalt
sari, sarve alluvalt je
domeid (tugevasti alluvalt)
kõik esineb ka
arvutuse ja teinud.

[Faint handwritten notes and diagrams on the left page, including some numbers like 1210, 1238, 1241, 1281, 1282, 1283, 1284, 1285, 1286, 1287, 1288, 1289, 1290, 1291, 1292, 1293, 1294, 1295, 1296, 1297, 1298, 1299, 1300, 1301, 1302, 1303, 1304, 1305, 1306, 1307, 1308, 1309, 1310, 1311, 1312, 1313, 1314, 1315, 1316, 1317, 1318, 1319, 1320, 1321, 1322, 1323, 1324, 1325, 1326, 1327, 1328, 1329, 1330, 1331, 1332, 1333, 1334, 1335, 1336, 1337, 1338, 1339, 1340, 1341, 1342, 1343, 1344, 1345, 1346, 1347, 1348, 1349, 1350, 1351, 1352, 1353, 1354, 1355, 1356, 1357, 1358, 1359, 1360, 1361, 1362, 1363, 1364, 1365, 1366, 1367, 1368, 1369, 1370, 1371, 1372, 1373, 1374, 1375, 1376, 1377, 1378, 1379, 1380, 1381, 1382, 1383, 1384, 1385, 1386, 1387, 1388, 1389, 1390, 1391, 1392, 1393, 1394, 1395, 1396, 1397, 1398, 1399, 1400, 1401, 1402, 1403, 1404, 1405, 1406, 1407, 1408, 1409, 1410, 1411, 1412, 1413, 1414, 1415, 1416, 1417, 1418, 1419, 1420, 1421, 1422, 1423, 1424, 1425, 1426, 1427, 1428, 1429, 1430, 1431, 1432, 1433, 1434, 1435, 1436, 1437, 1438, 1439, 1440, 1441, 1442, 1443, 1444, 1445, 1446, 1447, 1448, 1449, 1450, 1451, 1452, 1453, 1454, 1455, 1456, 1457, 1458, 1459, 1460, 1461, 1462, 1463, 1464, 1465, 1466, 1467, 1468, 1469, 1470, 1471, 1472, 1473, 1474, 1475, 1476, 1477, 1478, 1479, 1480, 1481, 1482, 1483, 1484, 1485, 1486, 1487, 1488, 1489, 1490, 1491, 1492, 1493, 1494, 1495, 1496, 1497, 1498, 1499, 1500]

unarmad allanvõrreid,
 kirjutan liid. Valdele
 mõlema hell saamis, allente
 madal and rõhked hõlled,
 sarvunud muuakse pui-
 nel.

159,1 - 159,9

0.20

(0,8)

Lõv (stamm) uollas-
 roone, peenetereli, mu
 allente.

159,9 - 160,3

0.35

0,4

Doment, kirjelt allente,
 kirjelt muu uunakel
 tramentuund, kirjutan-
 line, ualpool valdevee
 muuakse puiud, allpool
 mõlema d koonde. keenu
 over faene (Lingule?)
 pagmente

160,3 - 161,0

0.35

(0,7)

Allente, saamis,
 muuakse puiud, väikeste
 rõhked hõlled. koonde
 pisut kiltne kirjelt
 tramentuund

161,0 - 161,4

0,35

Domaint; vax fupervakt
tumeturund, massivne,
allapoll muramb
aluminium, te oate ut
te neta letsoo on asti.

0,4

Faine pegantha, kiyu-
varvne, pshil puvu,
muu, vavhasti tehnodis-
te uises oes volde-
vid roken hilledes
[rokened, vobletvnes]
too vel.

Prier II

421-1614 } 161,0-161,2

161,4 - 161,7

0,35

0,3

Alurokt, sarsu, puvu-
muu, usyelt tleunt,
pust wtk.

161,7 - 162,2

0,40

0,5

Domant, sarsu, vobltis.
kall, kiruvantuu. Aluvu,
oes aluminium, roken
muas puv, te an nend
sarsu, alurokdis.

uv⁴
uv³

162,2 - 162,3

0.10

(0,1)

~~siivoksi~~
alluvioit, siivoksi,
punasamm, vaurin,
~~vesimäet~~
~~puvot~~ vaurin.

Draw 12 } 162,2-162,3
421-1622

162,3 - 162,8

0.35

(0,5)

alluvioit, siivoksi
samm (sari, alluvio)
punasamm, vaurin
trinit, puit alk.

162,8 - 164,1

0.70

(1,3)

Alluvioit, ~~siivoksi~~ pohjalla
siivoksi, alluvioit
jo väinesti vaurin.
olne keo alluvioit, sar-
ves. Pohjalla, kolid
punasamm, vaurin, vaurin
vaurin (2-3 cm)
Trinitets vesum ai
siivoksi. Alluvioit seure-
nlo trinitets. je
karbonaattus. Uoi
alluvioit on karbonaatt
us siivoksi, siivoksi
siivoksi alluvioit.

~~Purraam~~
~~kon dnd~~

nye des
 wshid

?

nye des

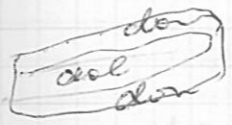
pnow 13 } 163,0 - 164,0
 421-1630

(purple spoon)

164,1 - 164,6
~~164~~
 0,4

Downst, wryet
 allewhe, timu, wlab
 us hll

164,6 - 164,8
 0,15



Downst, wshid hell
 sarves, tikel picev's
 uer wshid hell
 downst, wshid
 whi pounnd 3-5' cu.
 whi wshid on
 puler dolowt.

164,8 - 165,8
 0,7

allewht, ulmnd
 0,7 je alund 0.10
 urvand je wshid hell
 wshid sarves si
 pnow, pur, wshid ke
 wshid pur. wshid, wshid
 wshid, wshid wshid
 wshid wshid wshid
 wshid.

Näytille

165,8 - 166,1
0,3

Douent, välehtus,
kalle, tühine

166,1 - 166,2
0,07

Douent, alumiin,
sohene, häll

166,2 - 166,5
0,2

Alumiin, liivane
(kovanur, alumiin) sohene,
uur püesimise all, püesit
kõrgu, kesumisele on
ajunud tühine
kõrvald uueks

Praks 14 }
421-1663 } 466,3-166,5

massiivne, uueparatuse
sohene saw püesit }
sohineid kane.

166,5 - 166,9
0,1

alumiin, sarnas
püesit, püesit tühine
uueks, tühine püesit
all all-kamara
alumiin.

166,7 - 168,0

1,8

Dokument supvast
 alluvio, uupuvami-
 line - suute launde
 voheshell ja puus-
 puuvuuz. Prensoids
 asti valdavalt
 kesumme u tuze
 alluvio meter jll
 lulle vast lumb
 suusti, euti aq
 pesedu alluvio
 oos luv auehch
 voheshellde, alluvio
 d'nyde presunt

~~168,0~~

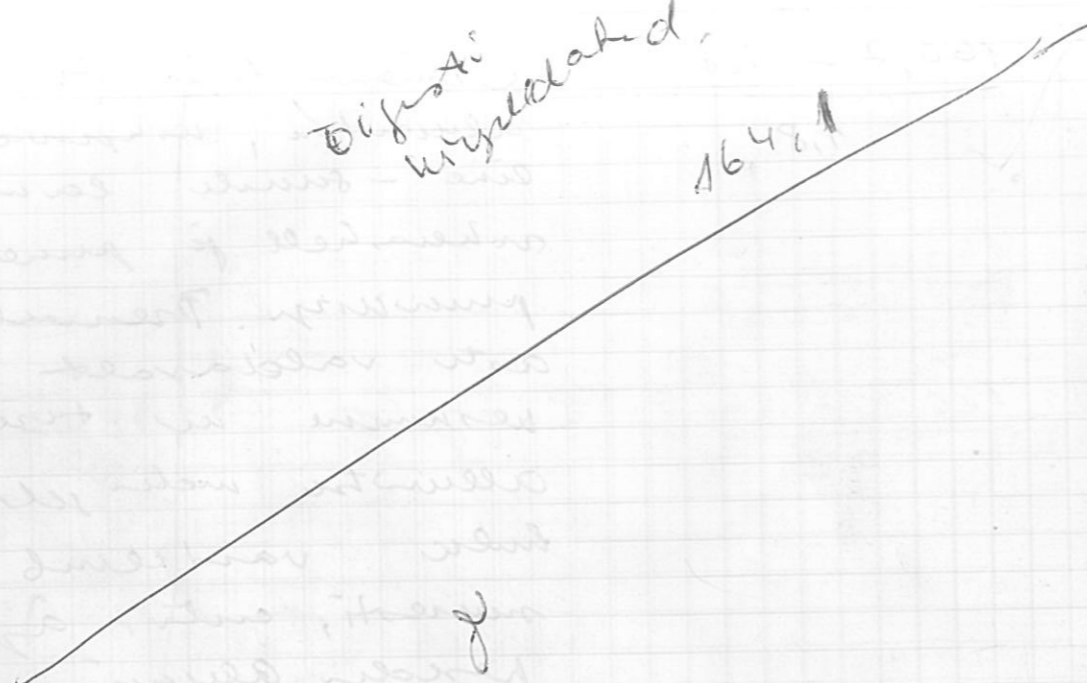
~~0,90~~

W

Prof. Oles

Digusti
wytalad.

164,1



Päradeid

164,1 - 164,8⁵

0,5

(47)

Aluski, liivane an
sarnus, pinnas, pu
wytalad, wadest
rohene, hellede ja
mole. nali ~~...~~
tahwale ja mustu
kimpule (?) pigneto

164,8⁵ - 165,0⁸

1,0

2,2

Donant, tujerast
alustki, pinnas, pu
rohene, hellede tahwale,
kaljus, merr.

165,0⁸ - 165,2⁹⁰

0,10

(10)

alustki, tujerast
sarnus (sarn, alustki)
pinnas, pu tahwale
pidevat all allkann
~~...~~ wraus alustki

165,2⁹⁰ - 167,0⁷

0,6

(17)

Alustki, liivane,
halewas, pu. allkann
on pinnas, an. Kean.
mullat tannet.
Alustki on sarnus.
Liivane mullat ja
tannet tahwale alle

Paan de di

pool. saris on p. 12
with.

70.7 171.5
167,0 - 167,6

0.40

aleurolit, saris /
alumnebr, saris on
punasur, saris
nallale barudis
Nigunur, Nigunur dily,
lesur. traent.

171.5 172.0
167,6 - 167,9

0.15

Li vanis, penele
kaleas pur, Nigalit
traent.

172.0 172.7
167,9 - 168,3

0.35

Sar, aleurolit (aleurolit,
saris), punasur
Nigunur, Nigunur
pundage. Li aloch
sent west rid.
bent bent
Nigunur, Nigunur
Nigunur dily

Pacoma



172.7
~~168.3~~ - ~~168.5~~

0.10

(0.3)

Siivauri, penetra
 valpas hell, rohuat
 velpunade di.

172.8m
 421 - 1684 y 168.3 - 168.5

173.0
~~168.5~~ - ~~168.9~~

0.35

Sari, alluaste, pimes -
 juu, rohuat hellide
 fahidaj allu. velpun
 pesade. kinsale (?) juu
 uutu

173.7 - 173.8

0.05

(0.1)

Siivauri, penetra, arjalt
 vent, valpas hell, Rohauat
 velpunneade.

173.8 - 174.8

0.95

Douent, sarus, arjalt
 alluaste, vira. velpun,
 pimes, karven where
 fahidaj. Veldet pimes
 juu van

174,8 - 174,7
0.10

Dolomit, tujv, vabja
kripts krist, kaverakon,
kesidune kristalli

174,9 - 179,7
3 m

Dolomit, kalli, tujv
sarrus, uohati
pisut krijs, ent
ulluvus oes, ku
on pumapum
tahae, dotsuupidi
kiasni

Puuro 16 }
421 - 1757 } 175,5 - 176,0

179,7 - 180,3
0.55

Dolomit, sarrus,
kalli, sarrus uahetel
vohakiti muu
je on uoheti ull
wneulme domens
karru, tujv

~~uu~~

||

~~uu~~

0.32

||

~

uu²
uu^{2+ku³}

~~uu~~

uu¹
uu²

0,6

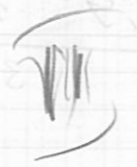
2
uu³
480,3
uu²

$\begin{array}{r} 5 \times \\ 12000 : 187 = 64,2 \\ \hline 1122 \\ 780 \\ \hline 3 \\ 748 \\ \hline 320 \end{array}$

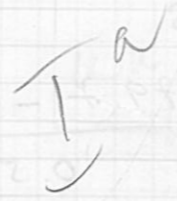
$\begin{array}{r} 4100 : 187 = 22 \\ \hline 374 \\ \hline 360 \end{array}$

$\begin{array}{r} 2500 : 187 = 1 \\ \hline 187 \\ \hline 630 \end{array}$

18,7
 dow 12,1 ~ 64,2%
 dol 4,1 ~ 22%
 sav 2,5 ~ 14%



$\frac{1}{187}$



$\frac{180,3 - 186,1}{3,4}$

180,3 - 186,1

5,8
 (0,3)

Dorewt, ulain 1-2m
 ulain dolow 2
 all pool sav semer
 vchem ka. Hall
 all pool voler
 molitimi cerud
 kesud pur camp
 voler +
 Noylt cin.

17
 421 - 1810 } 1800-1813

$\frac{186,1 - 189,0}{1,8}$

1,4
 (1,0)
 (0,5)

Nabeldurdod savm
 dolowt je voler
 keel ulisim pudog
 kerb sav. Sav
 funkeel, dolowt
 wher keel, khet
 ne halli dolowt
 50% dolowt
 30% sav
 20% dolowt

421 - 1888 ¹⁸⁸⁸ 1888-1890

1890 - 1919

1, 6

0, 2

2, 7

Dolomnt, valupis -
muv rohuu y holly -
pall. Taper, unripts -
vintelu - Varuon
uaverne. Kis lalluun
Vehentitu. donut,
w hene bell. 3-5 an,
n dult vll.

1919 - 1933

1, 3

0, 4

1, 0

Sari, dolomnta, tane -
wall, waeth libruu -
pudader, dolomnt -
vohid dnt dolomnt
with dize (3-5 an).
Dolomnt kiluall in
holleu bell, ~~pant~~
vur vnti var vnti varen.
de se vntell pene dize
be ouv ruidd vnt
Emeb kurruu vntell.
Dolomnt savoy

justus tibi parvum.

193,3 - 196,0

2,0

0,3

2,4

Domest, roheas hall
pohitelt dolomhe
age he samu^{palu p, 7} kollen-
hales (nauhoi) dolom-
mool vohuilla - uer,
mut uaver noone,
bituminoosete joudedz.
ulmuals 193,8 - 194,1

Pras 19. } 194,6 - 1950
421 - 1948

196,0 - 199,0

0.65

0,2

0,2

2,6

Domest, breits roledr
dentunz, uoheli samu
je tume heil uohel
hellell. Verirol samu
je poolin, dolomhe
(0,1 - 1,5 cur). Kemun
oras kollare dolomhe
fo muuho savu vohu-
uhte.

Pras 20 } 1965 - 1975
421 - 1970

[Faint, mostly illegible handwritten notes on the left page, including some numbers and symbols.]

199,0 - 205,2

2.50

71
Lüvaanur, uemur u
peeneleel, ~~uemur~~
ball - hall uemur,
uõpset uem uemur
uemur, kallauu.

Proov 21 } 199,0 - 200,0
421 - 1995

Proov 22 } 204,5 - 205,2
421 - 2051

Proov 23 ?
Oleemur uem uõletti
es.

205,2 - 207,3

0,9

Lüv (õlam), peeneleel,
pullauu uem

207,3 - 207,8

0,3

Lüvaanur, peene - uem -
ter - line, uõpsetti - uemur
uõ kallauu, uõletti, uõletti.
Lüv uõletti, uõletti

Proov 23 } 207,3 - 207,8
421 - 2075

207,8 - 209,0
1,0

div (Ileum), penetral
vos anes kolan.

209,0 - 209,4
0,30

div auri, penetral
punas roe, kem ben
(trokoleline), 'ebardse
horisat. wilem.

209,4 - 209,7
0,3

Sari, heil, risat
alembre, allur. melang
residen.

Pror 24 } 209,4 - 209,7
421 - 2095

209,7 - 212,6
~~3~~ 2,9

div auri, penetral,
halo, pua an pua
roe, usumiset trend
Pren allawen,
(pang)

Pror 25 } 212,0 - 212,6
421 - 2125

Takt
Tol

2,508 - 5,708

8,508 - 8,708

[Faint handwritten notes and bleed-through from the reverse side of the page, including numbers and illegible text.]

212,6 - 213,0
0,4

Siivaur, peenleru
dolowite, vep kuser,
volition, hell, tris wh.

213,0 - 213,8
0,8

Siivaur, peen - un
vesumaterialne, vesumelt
ment. kesumistelt
all p. itel. Hallon
pun. Peenelt avont,
whilone, vohett alle
aulet Fuchlun

213,8 - 214,0
0,2

Sant, dolowite,
vohet meum, hell,
lirsem jindledye

26 }
421 - 2139 } 213,8 - 214,0
Spowel

214,0 - 214,8
0,8

Aleurdit, vovare, voland
vovare, kesumelt, ment. Nitpe
jindledye valla
whilone, Hallon
pun. Avon or
part puch

[Faint, mostly illegible handwritten notes on the left page, possibly bleed-through from the reverse side.]

220,3 (brennende feur)
 214,8 - 221,7 (warsteinst feur) $\left\{ \begin{array}{l} \text{warsteinst feur} \\ \text{sein} \end{array} \right.$
 3,8 220,0

in dem die aus
 resurrexion alle
 peccaten, so
 nur in hallen
 die aus der welt
 alle die wunden
 punden. Resurrex
 heart. Prodiges wuh
 Pars along str (30) Voluss
 hall, welp
 Prod 27 $\left\{ \begin{array}{l} 216,0 - 216,5 \\ 241 - 2163 \end{array} \right.$

Prod 28 $\left\{ \begin{array}{l} 220,0 - 220,3 \\ 241 - 2200 \end{array} \right.$

[Faint handwritten notes and calculations on the left page, including numbers like 214,8, 221,7, 3,8, 220,0, 216,0, 216,5, 241, 220,0, 220,3, 241, 2200.]

kur (05)

221,7
220,3 - 224,0
2,5

75
Domen f, vhes hill,
vse oler vesh alvav.
ve, peshvakh.

Jan 29

2235
241 (223,0 - 224,0) 2235

224,0 - 224,5
0,5

slam, sov po
savliv sav trivny

224,5 - 226,5
1,8

Domen f, dolowk,
vhes hill, voheti
eti vavved vally
dolo v dly, fuy. 225,5
vohave poor dolo
vish vavv vohet.
~~te vohet~~ Aluv
vres domet

225,5 fup vevchd

Pramunkind (De-

ay. v pesh oler

m)

alluvial

Proa 30 } 226,0-226,5
241-2262

226,5 - 228,3
1,8

Dement, dolomite, clay, sand, gravel, pebbles, shells, etc.

Proa 31 } 226,8-227,0
241-2268

228,3 - 228,7
0,40

Dement, clay, sand, gravel, pebbles, shells, etc.

228,7 - 229,2
0,45

Allescht, man hell,
algus, vesnisest
neuent, diivan merub
tilerpool. kerbanh

229,2 - 231,2
1,1

diivan penkhal
valys, hall, vesnult
trunk

Pror 32 }
241-223 } ~~229~~
231,0-231,2

231,2 - 231,6
0,4

Allescht, rarus, an
~~alment~~ ^{row} alment
alukas hell, algus
vesnult hint

231,6 - 236,5
3,4

diu (povulst slen)
vosnes, hollen, penkhal
Intervall depers 25
ny 235,0 hejvar
trunk, halloskaly
evan vohem

Price 33 } 234,9 - 235,0
241 - 2350

236,5 - 237,5 0,8
aluro et, rohen shell,
nep dupu, sholou
koluh dom volun.
Fame)

Price 34 } 2367 - 2370
241 - 2370

237,5 - 239,7 1,9
lov (slam) peritua
roll era row

239,7 - 239,8 0,1
Dolom +, valzes her
uaveribom, smen
demonid pedly

[Faint, mostly illegible handwritten notes and numbers on the left page, including some numbers like 2310-2315 and 2310-2312.]

239, P - 241,8 ²⁶ .. Slavin, WV, penulu
1,5 roosane, kor

241, P - 242,2 ²⁶ ^{3,0} Livanu, valgeshell
0,30 restituelin, tuzin
dol tu nancy
tlemme nondant near
dol
Proc 35

242,2 - 244,0 ^{3,0} ^{4,6} ^{3,0} ²⁸ 241,8 -
0,9 Donant, roosshell
241 - 242,0
Proc 36

241 - 244,1
241 - 243,5 - 244,0

243,6 ⁴ - 245,0 ⁶² - wank
246,4 - kade pu,

Livanu, valgeshell, allewt
ke, tuzvadi tuzmit (idul)
kesul (ulid post) wuz
domevald - dolouant

0785-199

0785-199

0785-199

0785-199

0785-199

0785-199

0785-199

0785-199

0785-199

0785-199

0785-199

0785-199

0785-199

primus cell) vollen 2

Prin 37

244,5 - 245,0

241 - 244,5^{5.8}

0 primus 1

38 : km, ? - (245,5)

246,5

odp. 39 -

genyale

je melle ka

Urbums:

VIŠĶI-25

50308

22.tabula

Svītū un slāņkopu indeksi	Pasvītū, ridu un slāņu indeksi	Intervāls, m (pēc karotāžas datiem)	Intervāls, m (pēc faunas un litoloģiskajiem datiem)	Stratotips (pēc publicētajiem datiem)
Q		0 - 75		
D ₃ gj		75 - 146.5		
D ₂ br		146.5 - 198		
D ₂ ar		198 - 260		
D ₂ nr	D ₂ nr ³	260 - 283		
	D ₂ nr ¹⁺²	283 - 352		
D ₂ pr		352 - 357		
D ₁ rZ		357 - 368		
S _w pp		368 - 395		
S _{in} šv		395 - 423		
S _{in} st		423 - 429		
O ₃ tč		429 - 440		
O ₃ ad		440 - 463		
O ₃ uk		463 - 470		
O ₃ blt		470 - 476		
O ₃ sv		476 - 521		
O ₃ ml		521 - 529		
O ₂₋₃ vr		529 - 537		
O ₂ mz		537 - 581		
O ₂ dg		581 - 611		
O ₂ sg		611 - 615		
O ₁ jd		615 - 617		
O ₁ bč		617 - 618		
O ₁ dr		618 - 620		
O ₁ lt		620 - 623.5		
Cm ₁₋₂ cr		623.5 - 645.5		
Cm ₁ ln		645.5 - 732		
Vvr		732 - 752		
Vkt		752 - 788.5		
Vgd		788.5 - 825		
AR-PR		825 - 838		

Linde H. poalt Riart foodud-20

521
476
4 m

Urbums: ATAŠIENE-9

2. tabula

Svītu un slāņkopu indeksi	Pasvītu, ridu un slāņu indeksi	Intervāls, m (pēc karotāžas datiem)	Intervāls, m (pēc faunas un litoloģiskajiem datiem)	Stratotips (pēc publicētajiem datiem)
Q		0 - 60		
D _{3gj}		60 - 137		
D _{2br}		137 - 198		
D _{2ar}		198 - 248		
D _{2nr}	D _{2nr} ³	248 - 279		
	D _{2nr} ²	279 - 352		
	D _{2nr} ¹	352 - 378		
D _{2pr}		378 - 422		
D _{1gr}		422 - 452	427 - 455	
S _{wrg}	S _{wrg} ²	452 - 548		
	S _{wrg} ¹	548 - 576		
S _{inrm}		576 - 620		
S _{in sr}		620 - 625		
S _{in st}	S _{in st} ²	625 - 634		
O _{3sl}	O _{3sl}	634 - 640		
O _{3uk}		640 - 667		
O _{3blt}		667 - 671		
O _{3hl}		671 - 684		
O _{3jl}		684 - 699		
O _{3jn}		699 - 709		
O _{2ml}		709 - 718		
O _{2-3vr}		718 - 731		
O _{2mž}	O _{2mž} ⁴	731 - 738		
	O _{2mž} ³	738 - 747		
	O _{2mž} ¹⁺²	747 - 756		
O _{2dg}	O _{2dg} ⁴	756 - 775		
	O _{2dg} ³	775 - 786		
	O _{2dg} ²	786 - 795		
	O _{2dg} ¹	795 - 803		
O _{2sg}		803 - 806		
O _{1bč+jd}		806 - 812		
O _{1dr}		812 - 825		
O _{1lt}		825 - 828		
O _{1klv}		?		
Cm _{1-2cr}		828 - 864		
Cm _{1ln}		864 - 902		
Vvr		902 - 930		
Vkt		930 - 937		
Vgd		937 - 970		
AR - PR		970 - 992		